



# Welcome to Reception 2025 at Maundene Primary School



Key Information for Parents and Carers



# Meet the Team



Miss Joanne  
Capes  
**Headteacher**



Mrs Lucy  
Jackson  
**Deputy  
Headteacher**



Mrs Fiona  
Hampton  
**SENCO**



Mrs Kelly Rixon  
**Family Liaison  
Officer**



Mrs Carla  
Osment  
**Office and  
Admin**



Mrs Hollie Read  
**Kingfishers  
Class Teacher  
& EYFS Leader**



Miss Chrissie  
Magill  
**Doves Class  
Teacher**



Mrs Jennie  
Cook  
**Teaching  
Assistant**



Mrs Char  
Malt  
**Teaching  
Assistant**



Miss Toria  
Davis  
**Teaching  
Assistant**



# What is the Early Years Foundation Stage?



The Early Years Foundation Stage, or EYFS, is how the government and early years professionals describe the time in your child's life between birth and age 5. It is a very important stage as it helps your child get ready for school as well as preparing them for their future learning and successes.

## Prime Areas

Communication and Language

Personal, Social and Emotional Development

Physical Development



## Specific Areas

Literacy

Mathematics

Understanding the World

Expressive Arts and Design

Your child will be learning skills, acquiring new knowledge and demonstrating their understanding through the 7 areas of learning and development (**3 prime** and **4 specific**).



# Curriculum



At Maudene we believe in shaping and educating our children to become citizens for the 21<sup>st</sup> century by broadening their minds and experiences. We do this through our Inspire Global Curriculum, which comprises of 6 themes:



Each term, EYFS shape their learning around a topic which is enriched with a variety of quality core-texts, trips and provision. We also make strong connections with global learning and citizenship. The children will build up to a project each term. Past projects included planting gardens for the bees and donating Christmas boxes to charity. Along with this we ensure that children receive an age appropriate curriculum based on the seven areas of learning in EYFS.



# Learning Environments



The classroom learning environment is the 'Third Teacher'. It supports us all in giving messages about our ethos and values, and celebrates high quality learning. Through our high-quality learning environment, we provide your child with a stimulating, enriching and creative learning experience.

All of our classrooms are arranged so that children can move freely, accessing the resources and provision that suits their needs and interests. The equipment and resources are planned around the seven areas of development, and the global theme or topic.





# Learning Environments



We look forward to welcoming your child into our Early Years classrooms. Each of our classrooms has many different areas for the children to explore, such as literacy, maths, creative, sand, water, construction, a book corner and a home corner.





# Reading

**‘Reading has tremendous power when it comes to fueling the development of all aspects of language ability.’**

Reading is a vital part of your child’s education:

- At Maundene children have access to a wide range of books in their classrooms and are also given Little Wandle phonics books and story books to take home to read.
- Children will be given a **Reading Record book**, which should be filled in with a comment from parents/carers regularly – 3 times a week.
- Books are changed each week.
- Children are encouraged to read at home every day for at least ten minutes.
- Three times a week children will read with an adult in a reading group.
- Children will also have access to daily phonics lessons and small focus groups with adults





# Phonics – Little Wandle



In Reception, each child takes part in daily phonics lessons to develop their letters and sound knowledge, as well as to build on their early reading skills.

Grow the code grapheme chart

Phase 2, 3 and 5

s s ss c se ce st sc	t tt	p pp	n nn kn gn	m mm mb	d dd	g gg	c k ck cc ch	r rr wr	h h	b b bb	f ff ph	t ll le al	j j g dge ge	v v ve
w wh	x	y	z zz s se ze	qu	ch tch ture	sh ch ti ssi si ci	th	ng ng	nk nk	a a	e e ea	i i y	o o a	u u o-e ou
ai ay a a-e eigh aigh ey ea	ee ea e e-e y ey	igh ie i i-e y	oa o o-e ou oe ow	oo ue u-e ew ou ui	yoo ue u u-e ew	oo u* oul	ar a* al*	or aw au aur oor al a oar ore	ur er ir or	ow ou	oi oy	ear ere eer	air are ere ear	zh su si



We encourage the children to use phonics throughout their learning, and regularly promote phonics development within the resources and provision.



# Outdoor Learning



An important part of the Early Years curriculum requires us to provide children with ample opportunity for outdoor learning and malleable play, e.g. water, mud, dough etc.

By the end of Reception children are expected to,

***“know about similarities and differences in relation to places, objects, materials and living things. They talk about features of their own immediate environment and how environments might vary from one another. They make observations of animals and plants and explain why some things occur, and talk about changes.”***

*- Development Matters in the Early Years Foundation Stage*



As part of the curriculum children are entitled to access the outdoor areas at all times. We ask that you **please send children to school dressed appropriately for the weather and include a spare set of clothes.**



# Forest School



## What is Forest school?

Forest school is an educational approach to outdoor play and learning. It uses the outdoors to facilitate learning in a calm, peaceful and purposeful atmosphere.

During a forest school session children direct their own learning; they develop skills and interests at their own pace and grow in **responsibility, trust, confidence** and **co-operation**.

At Maundene we are very lucky to have our own Forest School on site and each class will visit once a fortnight as part of our EYFS curriculum – the children start Forest School in the Spring term.





# Forest School



## Health and Safety

Each session is led by the EYFS adult, accompanied by other EYFS members of staff. The teaching assistants are first aid trained. A safety sweep and thorough risk assessment is carried out before each session.



## Clothing

Parents will need to provide children with **waterproof trousers and coats OR an all in one waterproof.**

On Forest School days **please ensure your child is wearing long sleeves, trousers and a warm jumper/hoodie.** Children will need to **bring in a pair of wellington boots.** On cold days they will need to have a hat, scarf and gloves. On hot days they will need a sun hat.



# Attendance and Punctuality



At Maundene we encourage all of our children to strive for excellence. For each child to achieve their full potential, a high level of school attendance and punctuality is essential. Together we consistently work towards a goal of a 100% attendance for every child.

Why? All research shows that children, even at the earliest age, who have poor attendance and punctuality are less successful in later life. They find it harder to make and sustain friendships, they achieve less and they often suffer from poor self-esteem.

At Maundene we want the very best for our children, both now and in the future, and therefore developing these good habits now is vital. We encourage our parents to support us by bringing their child to school each and every day.





# Uniform



At Maundene Primary, **School Uniform** is compulsory and consists of:

## Winter

Red jumper or cardigan with Maundene logo  
Red polo shirt with or without school logo  
Grey trousers, skirt or pinafore dress  
Plain flat black shoes/ankle boots – no trainers  
(White or black socks or grey/white/red tights  
Book bag/Rucksack with Maundene logo

## Summer

Black or grey skirts, shorts or trousers  
Red and white gingham dress  
Red jumper or cardigan with Maundene logo  
Red polo shirt with school logo  
Black shoes  
Book bag/Rucksack with Maundene logo

**[Please name all items of clothing](#)**



## PE Kit

Red/black PE shorts or long black cycling shorts  
House Colour t-shirt with school logo  
Grey/black tracksuit or black leggings for outdoor PE  
Black trainers for outside PE  
Black plimsoles for indoor PE




# Lunch



You can choose for your child to enjoy school dinners or they can bring a packed lunch to school. Our dinner menus are available on the Maundene website. They are changed termly and are on a 3 week rotation. There are vegetarian options for every meal. All of our children eat their lunch together in the dinner hall.

We have fruit available each day for children to have as a snack, and you can sign up for school milk.

**Free School Meals**  
From September 2014, all Reception, Year 1 and Year 2 are entitled to universal school meals.

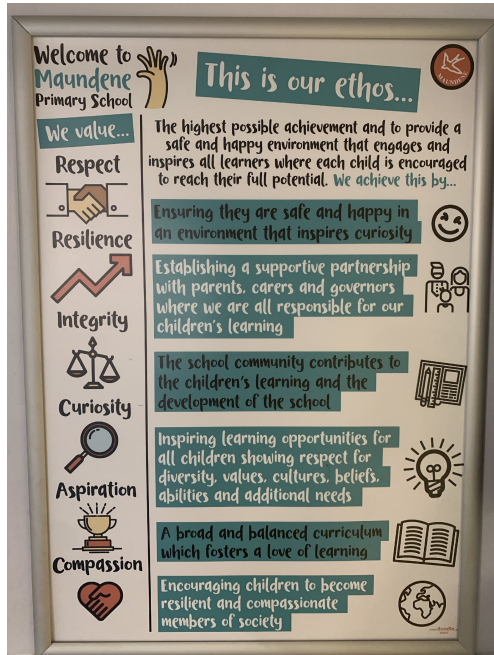
**SPRING/SUMMER 2025 MENU**  **WEEK 1**  
W/C: 23/04/2025, 12/05/2025, 02/06/2025, 23/06/2025, 14/07/2025, 04/08/2025, 25/08/2025, 15/09/2025, 06/10/2025, 27/10/2025

	MONDAY	TUESDAY	WEDNESDAY	THURSDAY	FRIDAY
<b>HOT DISHES</b>	<b>OPTION 1</b> Cheese and Tomato Pizza Served with Garlic and Herb Bread	BBQ Chicken Served with Wholegrain Rice	Roast Gammon Carvery Served with Roast Potatoes and Gravy	Classic Beef Burger Served with Potato Wedges	Battered Pollock Served with Chips
	<b>OPTION 2</b> Broccoli, White Bean and Leek Tart	Macaroni Cheese	Roasted Cauliflower and Chickpea Mashed Served with Wholegrain Rice	Quorn Burger Served with Potato Wedges	Veggie Fingers Served with Chips
	<b>OPTION 3</b> Tomato Pasta Fresh, Homemade Tomato Sauce with Pasta	Tomato Pasta Fresh, Homemade Tomato Sauce with Pasta	Tomato Pasta Fresh, Homemade Tomato Sauce with Pasta	Tomato Pasta Fresh, Homemade Tomato Sauce with Pasta	Tomato Pasta Fresh, Homemade Tomato Sauce with Pasta
<b>HOT DISHES ARE SERVED WITH TWO VEGETABLES AND FRESHLY BAKED BREAD</b>					
<b>DELI</b>	<b>OPTION 4</b> Filled Sandwiches Filled Sandwiches	Filled Sandwiches Filled Sandwiches	Filled Sandwiches Filled Sandwiches	Filled Sandwiches Filled Sandwiches	Filled Sandwiches Filled Sandwiches
<b>DELI DISHES ARE SERVED WITH MIXED SALAD</b>					
<b>DESSERT</b>	Fruits of the Forest Jelly	Chocolate Brownie	Banoffee Pie	Ginger Biscuit Served with Fruit	Strawberry Ice Cream
<b>BAKED POTATOES SERVED DAILY</b> With a choice of toppings		<b>AVAILABLE DAILY</b> Fresh fruit, salad, yoghurt and water		<b>Chartwells</b> Schools	
Vegetarian Vegan Oily Fish Wholegrain Fruity! Nutritionist's Choice <small>Our menu is subject to change. Please be assured that all notified medical diets and allergy requirements will be safely catered for.</small>					





# Classroom Expectations



Maudene Primary is a values-based school. Our values of **aspiration**, **compassion**, **integrity**, **respect**, **curiosity** and **resilience** are at the heart of our learning. We encourage the children to embed the values in their home and school life, and plan for these throughout our curriculum.

Alongside our values, we teach the children a wide range of soft skills they can build called the Inspire Character Skills. We encourage the children to develop their character skills of **Wonder**, **Integrity**, **Relationships**, **Mindset** and **Leadership**.





# Parent Engagement



At Maudene we know that parents are children's first educators and we value being partners with them in their child's education.

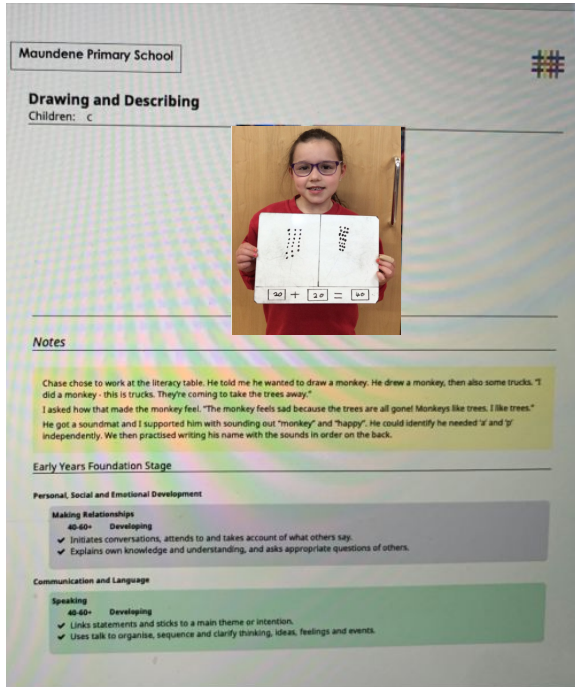
We ensure that parents are fully involved in their child's education by:

- Giving parents/carers the opportunity to take part in educational visits and share their interests and expertise
- Regularly sharing children's 'Learning Journeys' with parents and valuing the ongoing contributions to this from parents/carers
- Delivering workshops to share our practice, ethos and ideas with parents/carers e.g. Phonics demonstrations and Early Readers workshops
- Promoting a love of reading for parents/carers to read with their child in school
- Opportunities for parents/carers to participate in learning through celebrations like Christmas sing-a-longs, Sports Day, and class assemblies.





# Tapestry



Tapestry is an **interactive** online journal that provides you with the **unlimited access** to your child's learning and progress at school. Teachers use tapestry to record photos, videos and comments of your child's development. You can also upload photos and videos of their development at home. As a parent/carer it is your responsibility to take an active role in your child's learning.

Before starting in September, we will ask for your email address so that we can register you on our Tapestry system. You will receive an email with your login details. You can download the app or access your account in a web browser.

Tapestry is updated regularly by your child's class teacher and you should receive an email notification when a new entry has been added to your child's journal.



# Toileting



As September approaches and your child gets ready to embark on their exciting school journey, there's one key area we encourage you to focus on: toilet training. While every child develops at their own pace, being reliably toilet trained before starting school significantly benefits your child's confidence, independence, and overall readiness for the classroom environment.

Children who are toilet trained can fully engage in all aspects of school life without interruption. It allows them to participate more easily in lessons, playtime, and activities, fostering a sense of capability and reducing potential anxieties. From a practical standpoint, it also ensures a smoother transition for them and helps our staff dedicate more time to teaching and learning, rather than frequent trips to the bathroom.

We understand that toilet training can sometimes be challenging, and we're here to support you. If you have any concerns or would like advice, please don't hesitate to speak with us. By working together, we can help ensure your child has the best possible start to their school adventure!



# Arrangements for September



## Arrangements for September

*Gates open from 8:35am and doors open from 8.40am.*

All children will begin school on:

Monday 1<sup>st</sup> September – Wednesday 3<sup>rd</sup> September 2025 8:40am-12pm We request that you collect your child at 12pm from the classroom (no lunch at school).

Thursday 4<sup>th</sup> September – Friday 5<sup>th</sup> September 2025 8.40am – 12.30pm On these days your child will remain in school till 12:30pm and will have lunch between 12-12.30pm. Kingfishers Class parents will be invited to have lunch with their child on Thursday and Doves Class parents will be invited to have lunch with their child on Friday. Further information about this will be sent out soon.

Monday 8<sup>th</sup> September 2025 – From this date your child will remain in school for full days until 3.20pm.

**From Monday 8<sup>th</sup> September 2025 your child will attend school full time – 8:40am-3:20pm**



# Keep in Touch



All Maundene we have a school twitter and Instagram account. Teachers will be updating our social media on a regular basis so you can keep up with our amazing learning!



Follow the **school** twitter account:

@MaundeneSchool

@InspireSELondon

Instagram: maundenepriamaryschool

You can also access more information on our school website, or via email at:

[www.maundene.medway.sch.uk](http://www.maundene.medway.sch.uk)

[office@inspiremaundene.co.uk](mailto:office@inspiremaundene.co.uk)



Maundene Primary @Ma... · 02/04/2019 ▾

Eyfs are out preparing our new garden to help attract the bees. #savethebees



↻ 3

♡ 9

